



GAT MONTHLY MEMBERSHIP PROGRESS REPORT

Results as of: 12/31/2021

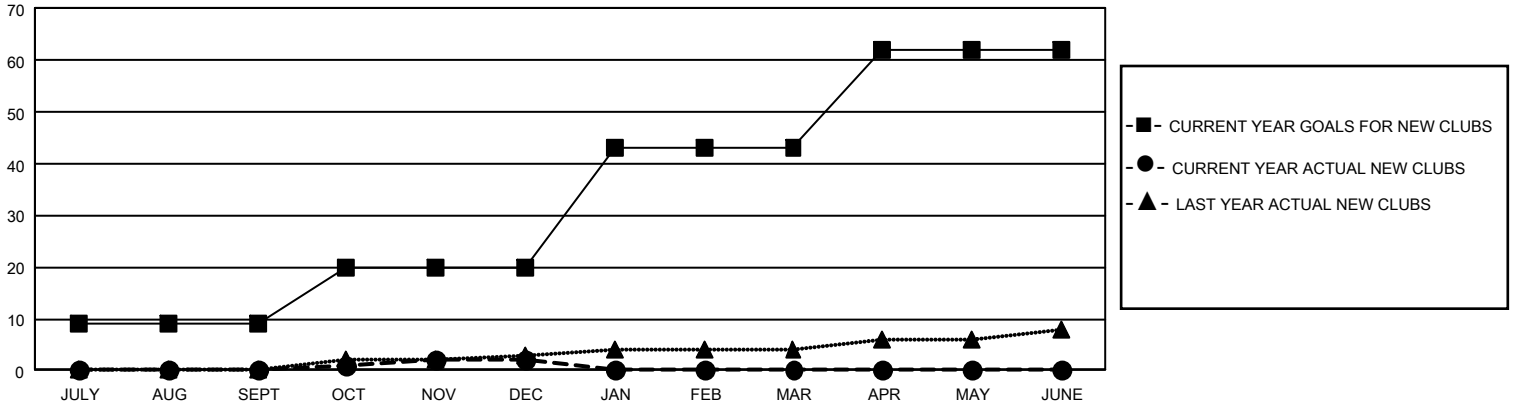
GAT Constitutional Area 5 - Japan

REPORT DOES NOT INCLUDE CLUBS IN UNDISTRICTED AREAS.

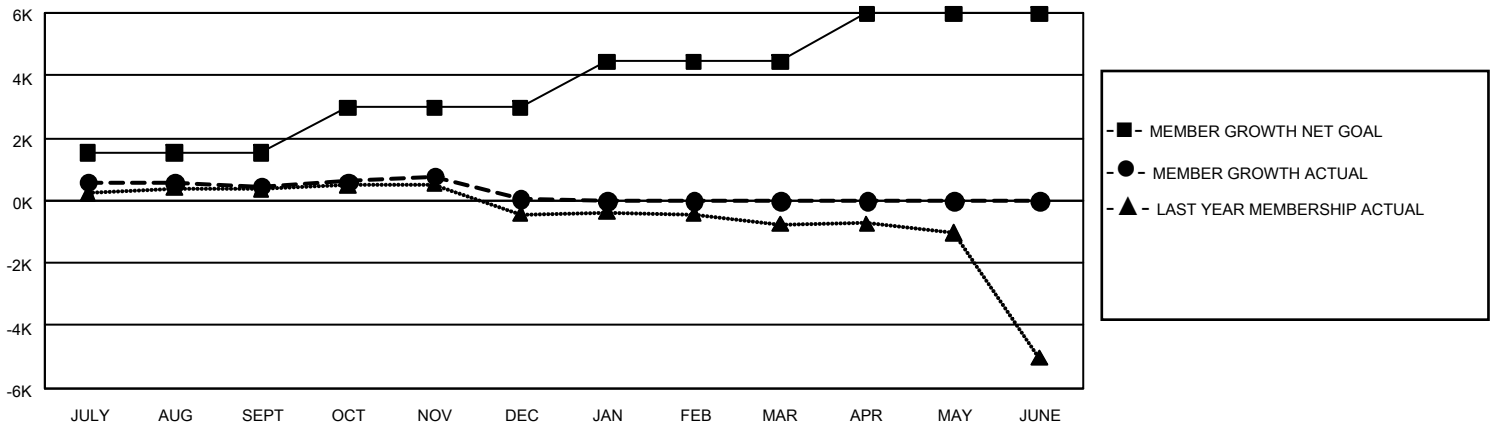
Clubs			
RESULTS FOR 2021-2022			
QUARTER	NEW CLUB GOAL	NEW CLUBS	DROPPED CLUBS
JULY/AUG/SEPT	27	0	5
OCT/NOV/DEC	33	2	10
JAN/FEB/MAR	69	0	0
APR/MAY/JUNE	57	0	0

Members			
RESULTS FOR 2021-2022			
QUARTER	MEMBER GROWTH NET GOAL	MEMBER GROWTH ACTUAL	DROPPED MEMBERS ACTUAL (including transfers)
JULY/AUG/SEPT	1540	1,942	1,350
OCT/NOV/DEC	1435	1,429	1,776
JAN/FEB/MAR	1461	0	0
APR/MAY/JUNE	1540	0	0

GOALS AND ACTUAL NEW CLUBS CUMULATIVE



GOALS AND ACTUAL MEMBERS CUMULATIVE



DROPPED CLUBS: 15	
DROPPED MEMBERS	
DECEASED	410
CLUB CANCELLED	45
OTHER	2,682
TOTAL	3,137

1,330 CLUBS OF 2,852 ADDED 1 OR MORE NEW MEMBERS

[CLICK HERE FOR CUMULATIVE MEMBERSHIP DATA](#)

GENDER DISTRIBUTION	
MALE	77,724 (76.55%)
FEMALE	23,814 (23.45%)
NON BINARY	0 (0.00%)
PREFER NOT TO ANSWER	1 (0.00%)
TOTAL FAMILY UNIT MEMBERS	35,329
FAMILY MEMBERS PAYING HALF DUES	19,550